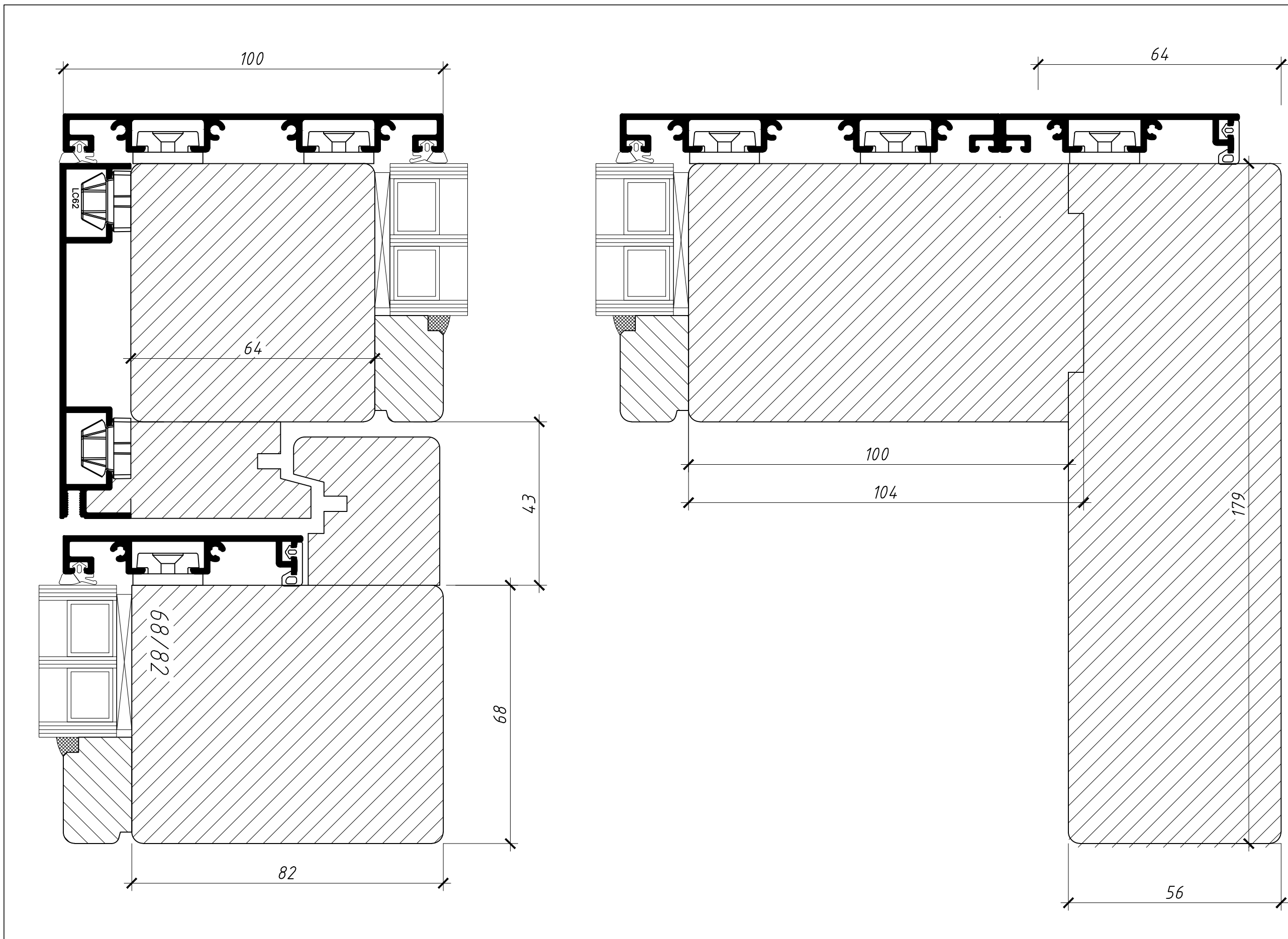


HS BMAF100.dwg	Echelle 1:1
\\winpro\redirect\thomas\Documents\TOM\dessin\af 100\HS BMAF100.dwg	Date 15/12/2014
MONTANT COTE OUVRANT	HS-BM-100



HS BMAF100.dwg

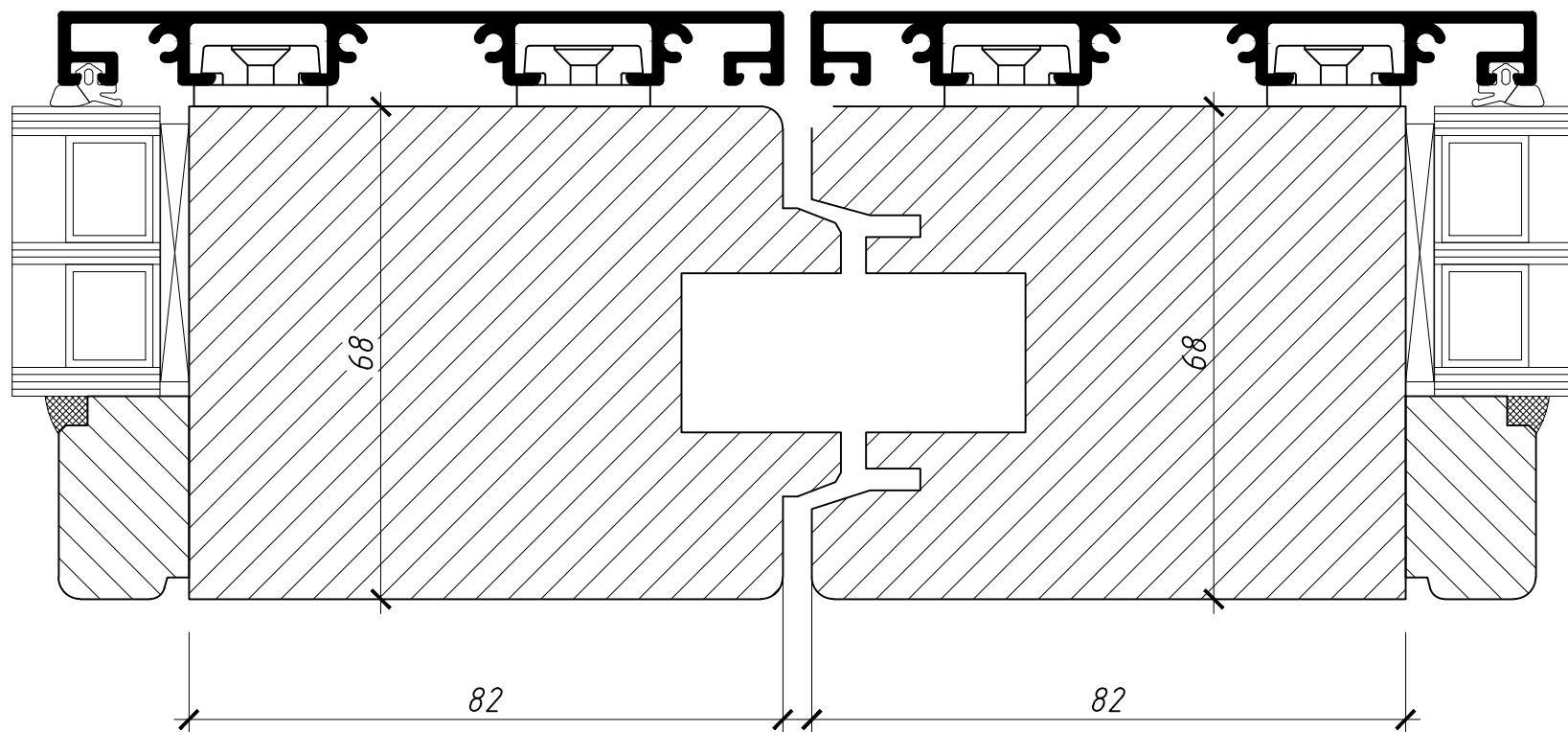
\\winpro\redirect\thomas\Documents\TOM\dessin\af
100\HS BMAF100.dwg

MONTANT COTE FIXE

Echelle
1:1

Date
15/12/2014

HS-BM-101



HS-BM-200	Date 15/12/2014	Echelle 1 : 1
-----------	--------------------	------------------



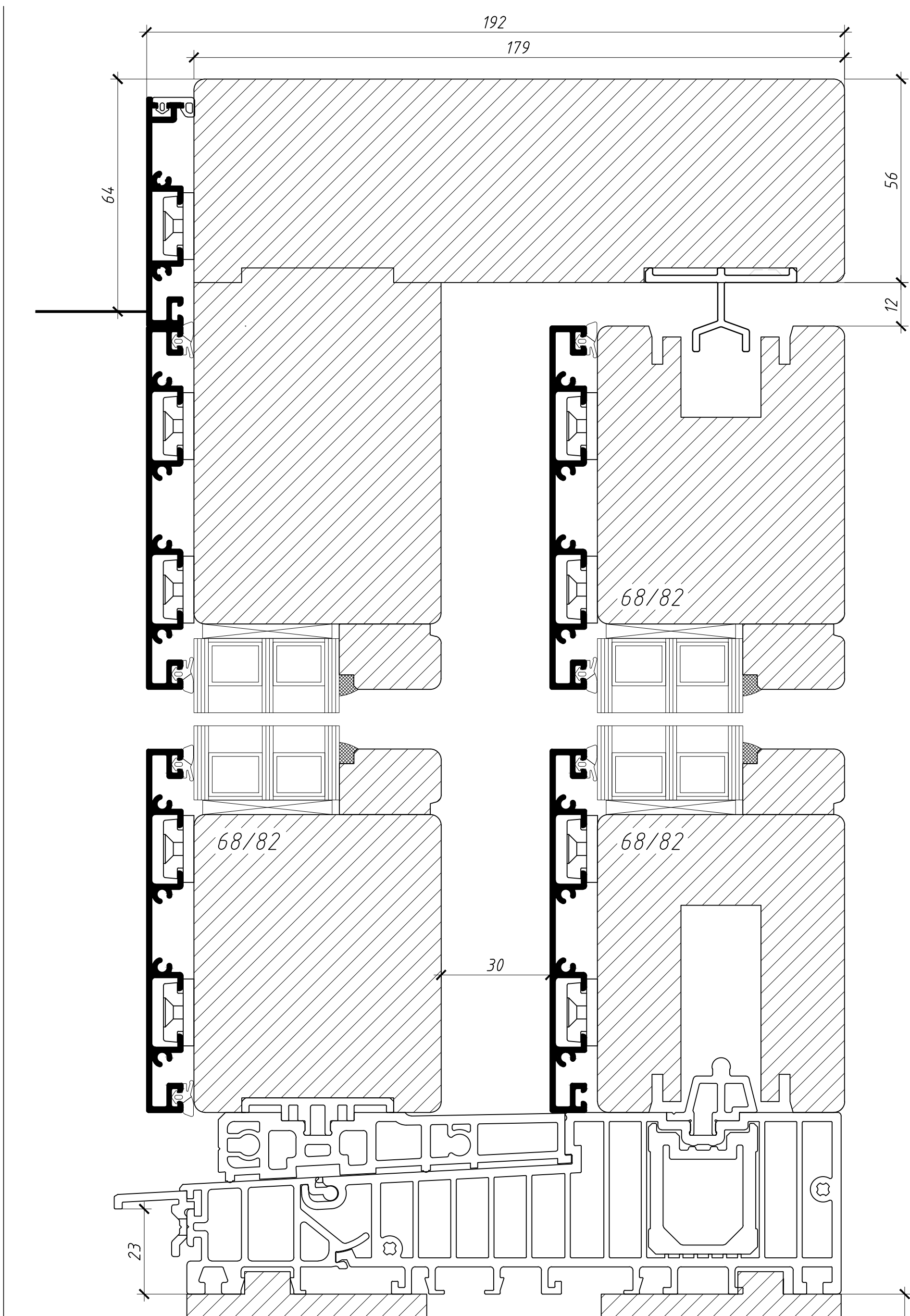
HS BMAF100.dwg

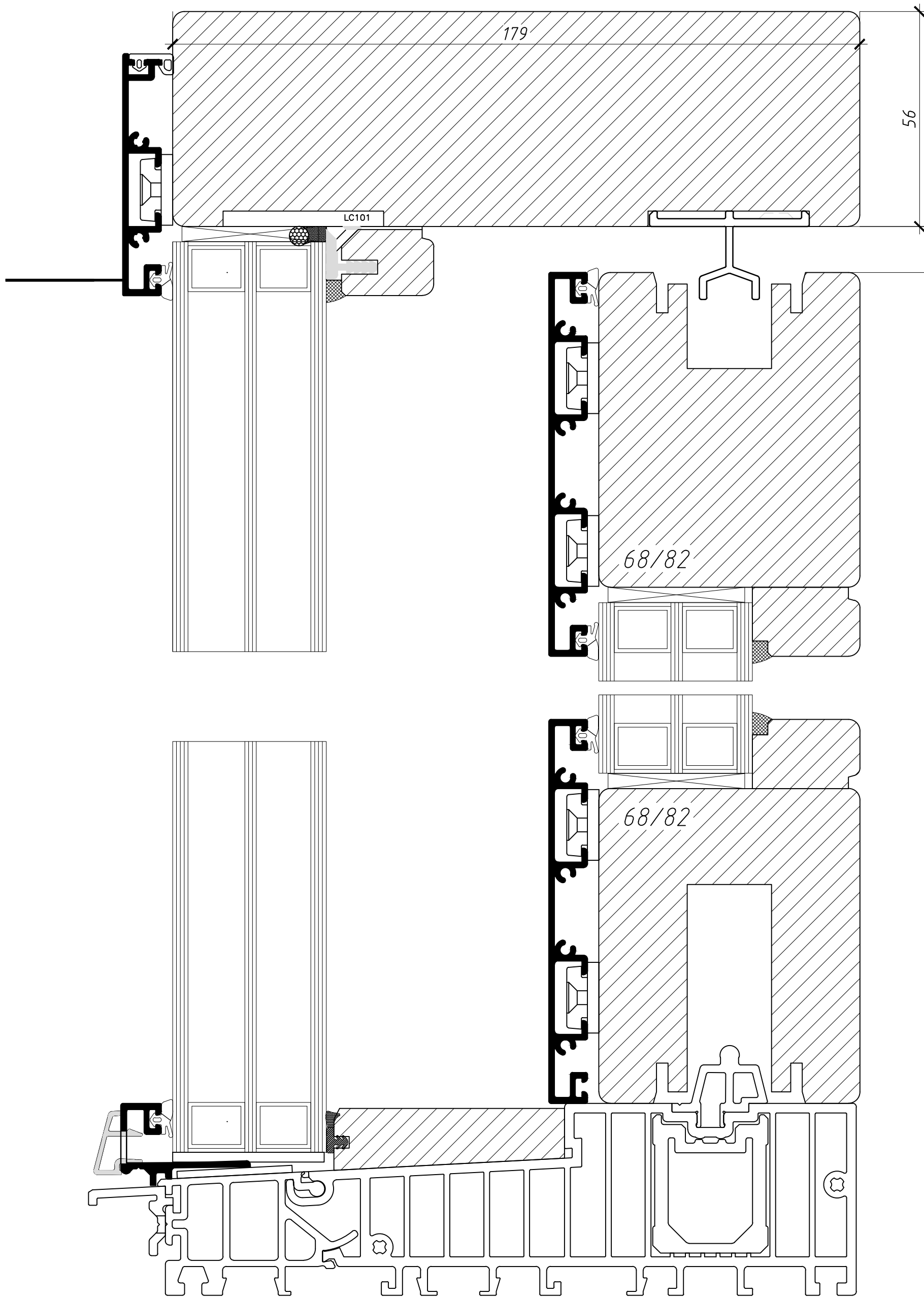
SCHEMA C
CENTRAL

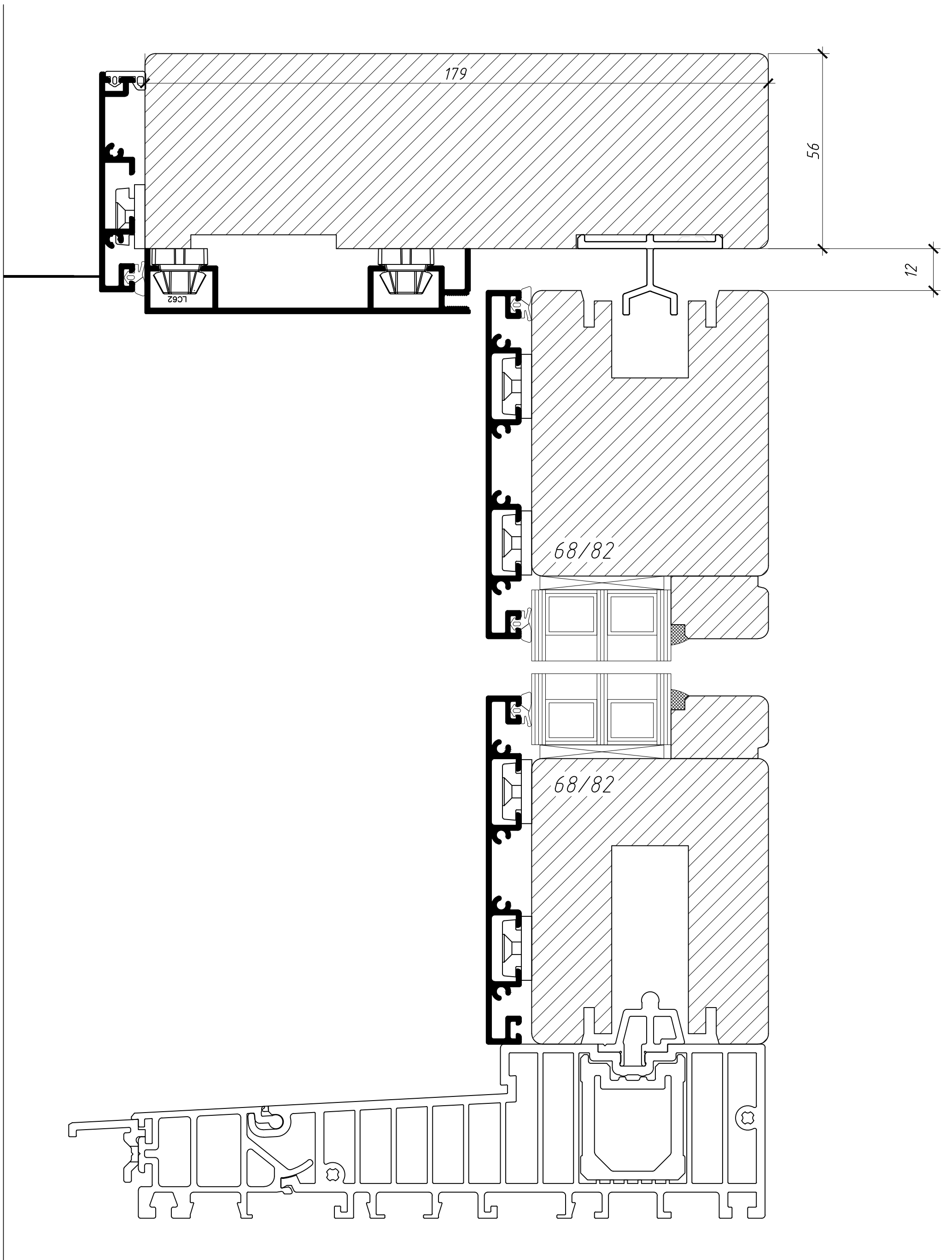
Echelle
1 : 1

Date
15/12/2014

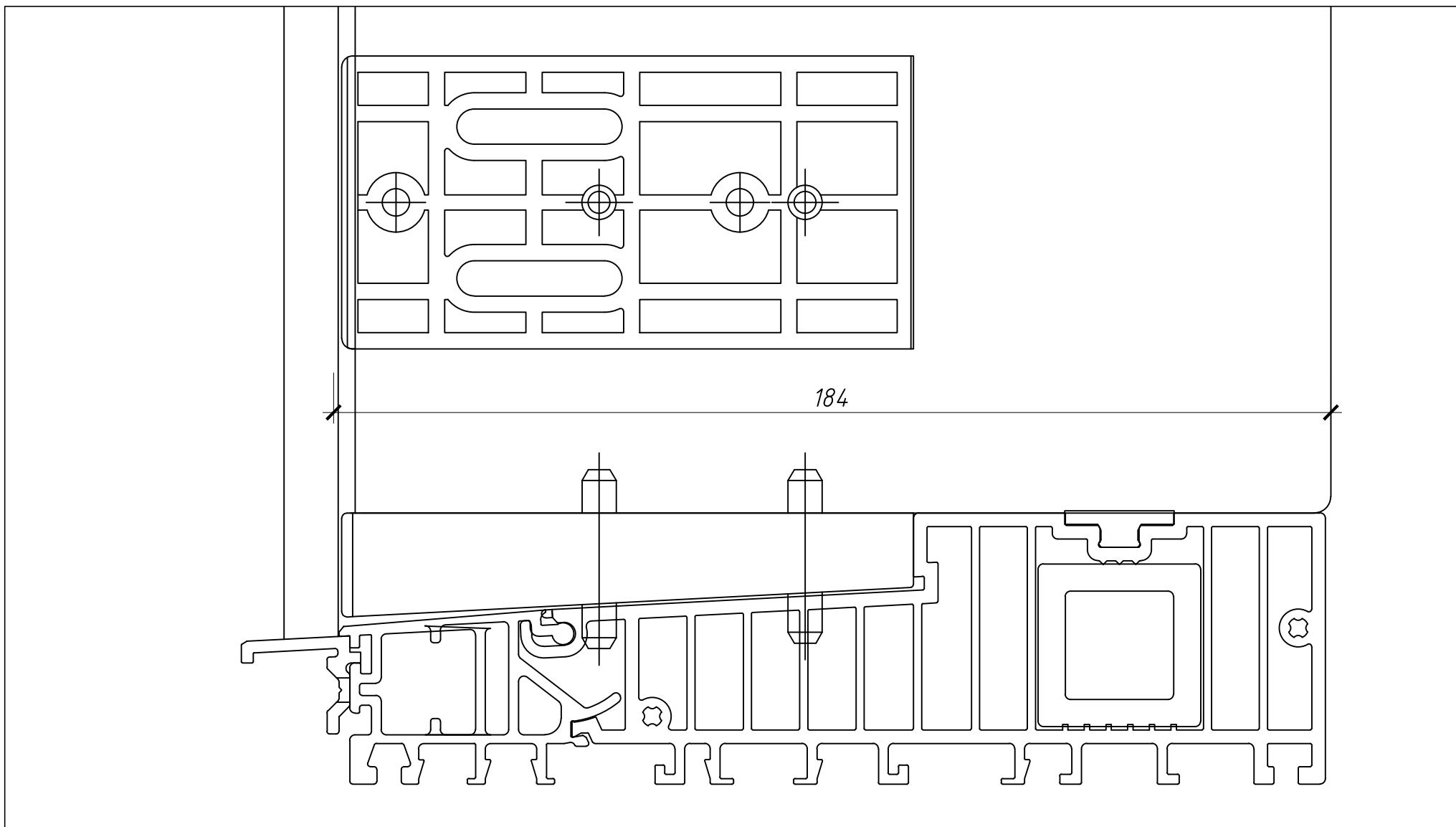
HS BM-







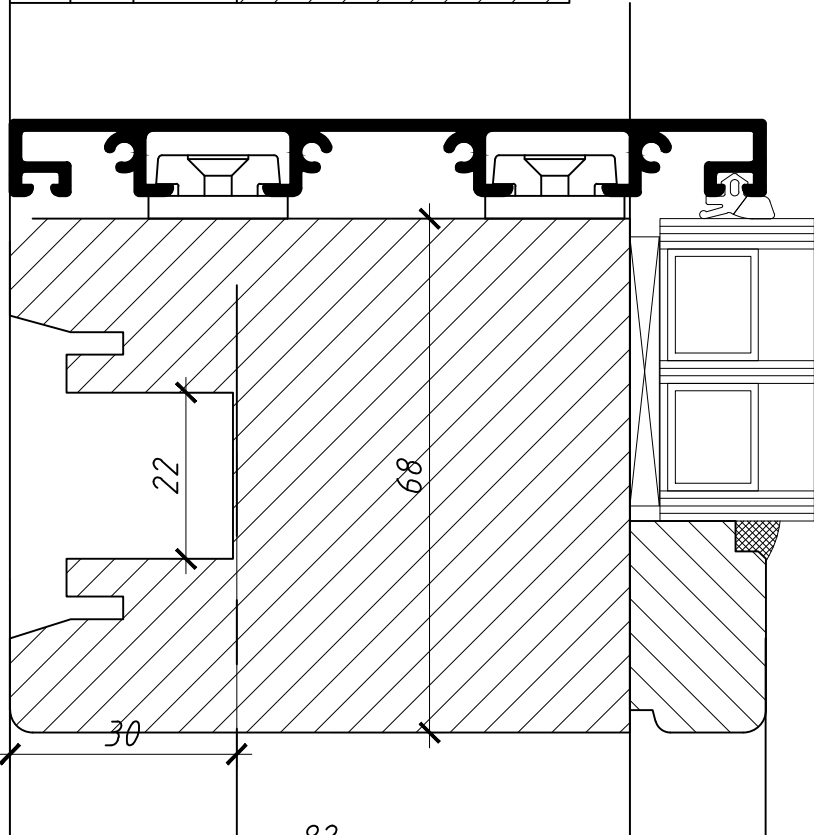
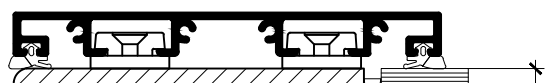
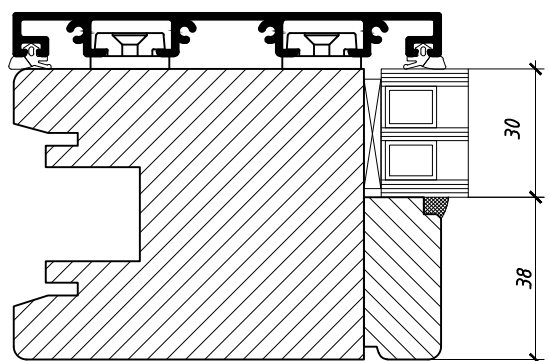
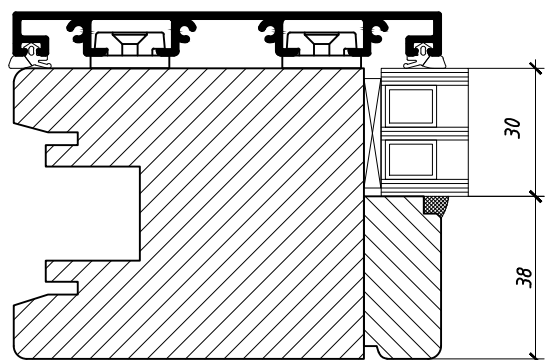
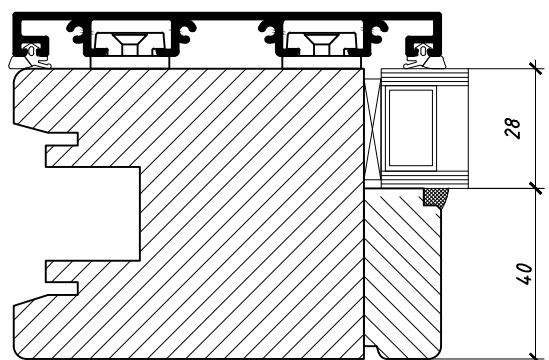
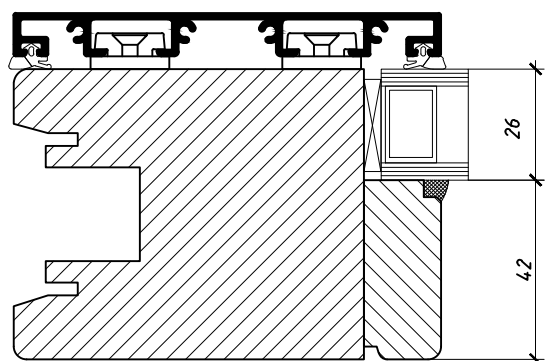
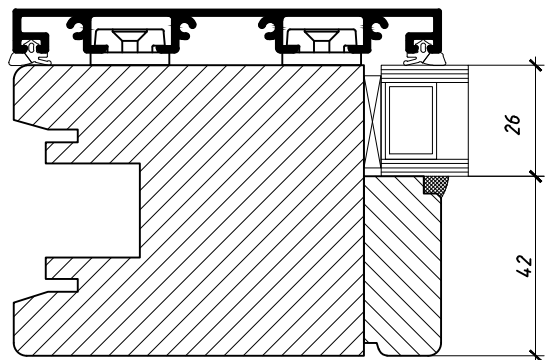
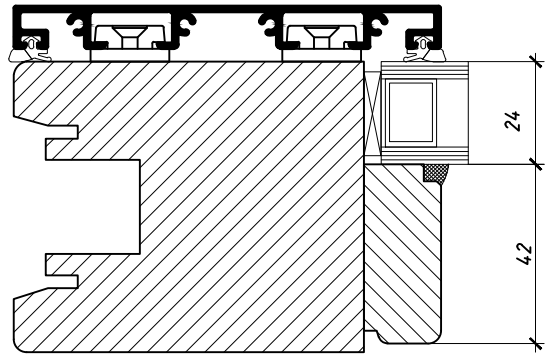
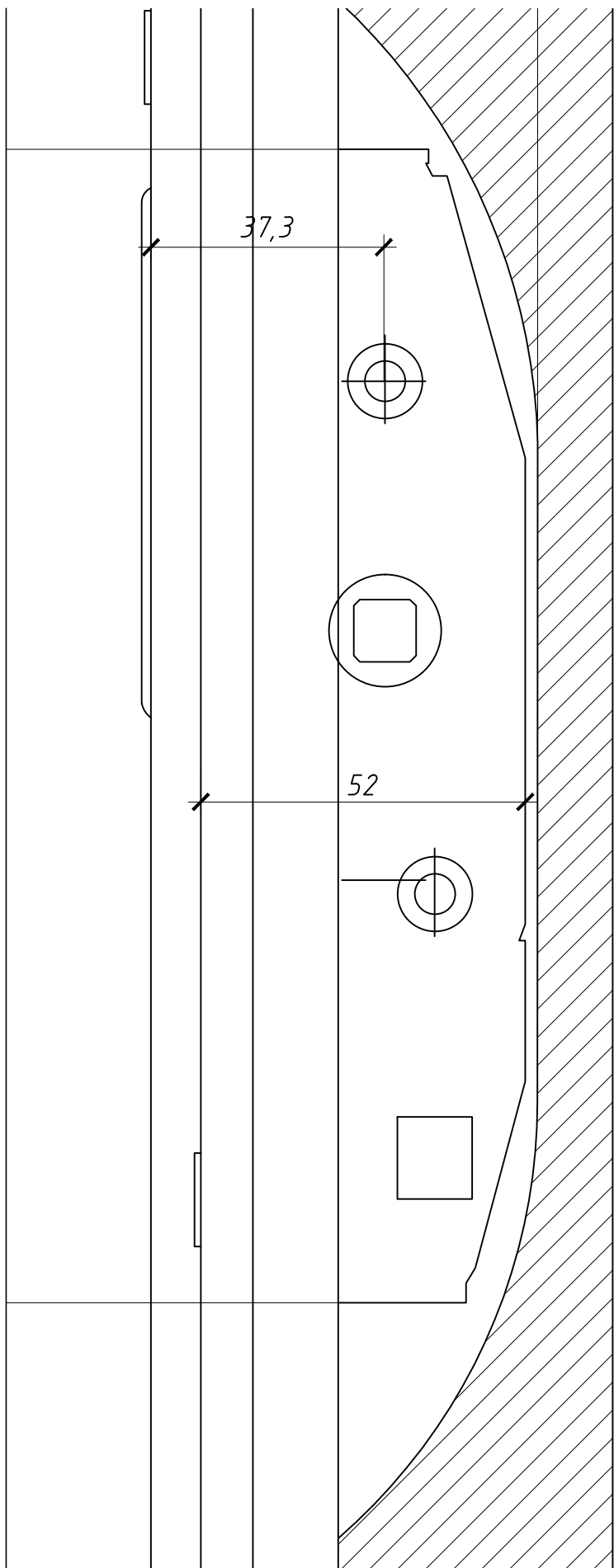
HS BMAF100.dwg	Echelle 1:1
\\winpro\redirect\thomas\Documents\TOM\dessin\af 100\HS BMAF100.dwg	Date 15/12/2014
HS-BM DETAIL VERTICAL SUR OUVRANT	HS-78-302



HS-92-303	Date 15/12/2014	Echelle 1 : 1
-----------	--------------------	------------------



HS BMAF100.dwg	Echelle 1 : 1
DETAIL ASSEMBLAGE CADRE SEUIL	Date 15/12/2014
	HS 92-



HS BMAF100.dwg

\\winpro\redirect\thomas\Documents\TOM\dessin\laf 100\HS BMAF100.dwg

MACHINAGE GUICHET
OUVRANT MISE EN BOIS

Echelle
1:1

Date
15/12/2014

HS-92-304